



BATTLE GROUND PUBLIC SCHOOLS

Proposition no. 7

# Capital Levy

FEB. 13, 2024

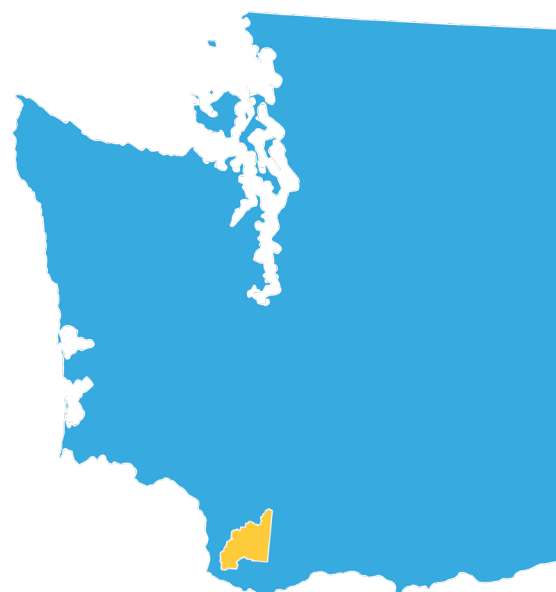
**NSPRA 2024 GOLD MEDALLION ENTRY  
BATTLE GROUND PUBLIC SCHOOLS CAPITAL LEVY  
BOND / FINANCE CAMPAIGN**

Amanda Richter, APR  
Director of communications and community engagement  
Jenna Buescher-Hill, communications specialist  
Chris Brown, communications specialist

**BATTLE GROUND PUBLIC SCHOOLS**

PO Box 200  
Battle Ground, WA 98604  
360-885-5470  
richter.amanda@battlegroundps.org

Number of communication staff: 3  
12,400 students  
Public K-12 school district



[www.battlegroundps.org](http://www.battlegroundps.org)

## SYNOPSIS



Battle Ground Public Schools is Washington state's 27th largest school district by enrollment and among the largest by geographic size. The district includes 19 schools serving 12,400 students and 2,000 staff members. It spans 273 square miles and includes several discrete municipalities, neighborhoods and communities ranging from rural to suburban with differing identities, cultures and viewpoints.

Although Battle Ground's standardized test results and graduation rates are consistently near or higher than the state average, and the district has long been known for its many career and technical education classes and programs, many Battle Ground schools are in poor physical condition and do not support the high-quality education that students receive.

Some of the oldest schools in the district were built in the 1950s. The last bond to build new schools was passed in 2005. Even schools built as a result of that bond are now more than 15 years old and starting to require larger repairs.

In 2023, Battle Ground Public Schools faced a critical funding gap. The aforementioned bond

expired at the end of the calendar year. Without a continuing, adequate source of revenue, the district would not be able to address the significant facility needs that were impacting the teaching and learning environment.

The district's board of directors approved a resolution to place a capital levy on the ballot in a special election on Feb. 13, 2024. The three-year, \$27.7 million levy would pay for repairs and updates at each Battle Ground school. While it would not allow the district to address the full scope of facility needs, it would help the district maintain aging buildings while considering additional funding options in the future.

Communicating the end of the prior bond and the need for the new levy was made challenging by past measure failures and a tax-sensitive district. By executing a comprehensive communication plan, however, the district was able to gain approval of a tax measure many years in the making and, most importantly, help improve the learning environment for students and staff for several more years.

## RESEARCH



A variety of research guided planning decisions that led to placing the capital levy on the ballot, as well as identified priorities and themes that informed the communication plan.

### Qualitative

**ThoughtExchange:** Almost 600 staff members, parents, guardians, students, community members and volunteers [shared their thoughts](#) on the top facilities needs. This feedback helped to inform questions in a statistically valid public opinion poll.

**Content analysis:** An analysis of past news coverage identified the scope of reporting on past measures and helped to determine timing for media relations around the capital levy.

**Advisory panel:** The district's [Citizens Advisory Committee](#) of highly engaged parents, guardians and community members from different geographic areas across the district identified facility planning as one of their priorities. Committee members provided qualitative input on what a good school facility looks like, top priorities and important information for the community to know. Later the committee also ranked the top priorities for future funding.

## Quantitative

**Enrollment study:** A [2023 study](#) commissioned by the district and conducted by FLO Analytics projected that enrollment would increase by about 19% over the next decade. The largest area of growth would be at the primary level. Schools in the southern end of the district would see the biggest increases. The study also found that the amount of residential construction within BGPS' boundaries is likely to be greater than that within other districts.

**Public opinion poll:** Prior to the board of directors authorizing the capital levy to appear on the February 2024 ballot, the district commissioned a [statistically valid public opinion poll](#). The poll was conducted via phone and text. The sample size was 308 people with a 95% confidence interval and margin of error of + or - 5.6%. Findings included:

### When it comes to school funding, residents are evenly split:



recognize the need for additional funding



think the district has sufficient funding



were unsure whether the district needed additional funding

BGPS parents are **most likely** to see the need.

- 49% of residents are satisfied with the quality of education in the district.
- 74% of BGPS parents are satisfied. The district was rated most highly on keeping students safe, followed by maintaining schools buildings and facilities and communicating with the community.
- Tax sensitivity is significant, with 56% of residents saying that taxes are too high.
- When it comes to funding priorities, residents place the highest priority on safety and security upgrades (62% top/high priority) and career and technical education programs (60%).

- Looking specifically at how to address aging schools, residents place a higher priority on updating and maintaining school buildings (55%) over replacing schools with new facilities (39%).
- Resonant messages focused on preparing students for life after high school, emphasized the ability to use matching funds wisely and highlighted the opportunity to invest in safety and security upgrades.

**Voter analysis:** Prior to the board of directors authorizing the capital levy to appear on the February 2024 ballot, an analysis of voting trends in recent elections identified the following:

- Battle Ground's median voter household income is slightly higher than the state average.
- Most voters did not attend college.
- Turnout is greatest among voters ages 65 or older, followed by those ages 50 to 64. These groups were less likely to vote in support of recent school funding measures.



District leaders faced some key considerations in their decision-making around the best way to pursue new funding. In the months leading up to the expiration of the bond, the district's board of directors considered different funding options. These options included a new bond measure to rebuild the oldest schools in the district or a smaller capital levy to make repairs to existing schools.

## Key considerations

- **Past bond attempts:** Several BGPS bond measures failed between 2016 and 2018. The most recent attempt received the lowest percentage of approval. In addition, few school bond measures received approval in Washington state in 2023. Out of 20 bonds attempted across Washington, only two met the 60% supermajority required to pass.
- **Public opinion:** Perception regarding the adequacy of the district's funding level was evenly split. Respondents preferred a remodel/renovate/repair approach over building new schools.
- **Tax rate stability:** With inflation on the rise, district leaders hoped to maintain the same tax rate as the expiring bond. A new bond would have most likely required a tax rate increase to cover rapidly escalating construction costs not adequately offset by state construction funding.
- **Enrollment predictions:** The district is anticipated to grow about 19% over the next decade. However, the growth is not expected for a few more years. Because impact fees paid by developers in Washington cannot be used in anticipation of projected growth, building new schools would require greater reliance on local taxpayer funds. In addition, Battle Ground was cognizant of neighboring districts that had passed a bond measure prior to a population increase and subsequently failed to pass additional bond measures to build additional schools, leading to overcrowding.

With these considerations in mind, the district developed a recommendation for a three-year \$27.7 million capital levy that would repair or update every building in the district. With this approach, the district would be able to maintain the same tax rate as the expiring bond and align with community preferences for repairing and renovating existing schools.



However, the intent to pursue a capital levy came only a few months prior to the election, creating a compressed timeline for raising awareness. A strong communication plan, grounded in research and supported by the board, district leaders and key stakeholders, kept the work on track to achieve the goal and objectives.

The \$18,000 budget for hard costs included printing, mail prep, postage and support from Educational Service District 112. Educational Service District 112 staff members provided tactical support for print collateral and video production, as well as planning and execution of social media content, and helped the BGPS communications team rise above the tight timeline to execute the plan.

Washington state's public disclosure law strictly governs the use of public facilities and resources in school district campaigns and prohibits any communication efforts that are perceived to be promotional or an attempt to influence the outcome of an election. In compliance with the law, Battle Ground's communications plan focused on sharing factual information in a non-promotional manner while meeting stakeholder expectations for transparency and following best practices.



## Key publics

- Staff, including contracted staff for nutrition and transportation services
- Parents and guardians, including established parent-teacher organizations
- Citizens Advisory Committee members
- Business and community groups

## Goal

To be a school district with facilities that are equipped to prepare each student for a successful future.

## Objectives (same for all publics)

### Short term

By February 2024, at least 50% of voters will feel that BGPS needs additional funding for facilities.

### Long term

By February 2027, at least 60% of respondents to a public opinion poll will feel that BGPS needs additional funding for facilities.

## Action & communication strategies

- Empower information sharing
- Engage community groups
- Ensure multilingual approach
- Regularly highlight facilities issues and needs
- Proactively seek media opportunities
- Use strong visuals to illustrate needs
- Emphasize career and technical education aspects of levy funding
- Communicate tax rate stability
- Continue to showcase individual and collective successes in BGPS

## Key messages

- Safety is a top priority. The capital levy funding would increase security by paying for things such as entry controls and security cameras.
- The capital levy would create spaces for students to learn the construction trades, culinary skills and health science.
- It would pay for roof repairs and improving or upgrading heating and cooling systems.
- Several of the district's schools have facility issues that impact the teaching and learning environment for students and staff.
- Every school in the district would receive repairs and/or updates.
- Battle Ground Public Schools spends millions each year to maintain schools, but many still have facility issues to be addressed, and state funding alone is not sufficient.
- If approved, the capital levy rate is projected to be \$0.44 per \$1,000 of assessed property value for each year.
- The capital levy would take the place of a bond measure that will expire at the end of 2023. The expiring bond rate is \$0.44 per \$1,000 of assessed property value.

## Tactics/tools

### Print

- Although the capital levy had not been authorized at the time of distribution, the [2023 annual report](#) highlighted facility needs and themes from the ThoughtExchange, setting the stage for subsequent levy communication.
- All households and businesses within the district received an informational brochure in the mail one week before capital levy ballots were mailed.
- Printed top 10 fact cards in English, Russian and Spanish were delivered to all schools and the district's translators/interpreters for distribution. Fact cards also were shared with parent/guardian and community groups.
- Printed posters were distributed to all schools and the district office to build awareness among staff, voting-age students, volunteers and visitors.
- Banners hung in high-visibility locations outside of all schools and the district office to build awareness among staff, voting-age students, volunteers, visitors and community members who live or commute near schools.

### Digital

- A comprehensive [webpage](#) served as the hub for all levy information and shared answers to frequently asked questions.
- Each week while school is in session, the communications department sends an email and text message with important information to all staff members and parents/guardians. Over the weeks leading up to the election, these emails shared the top 10 levy facts and details on how to get additional information.

- The communications department also sends a weekly e-newsletter called the BGPS Bulletin to staff and subscribers, who include parents/guardians and community members. Leading up to Election Day, each issue shared the top 10 levy facts and other levy information.
- An explanatory video provided a high-level overview of the levy. In recognition of the demand for short video content, especially on social media, this video is less than two minutes in length.

### Internal

- The communications department created a toolkit of resources for schools, contracted service providers and Citizens Advisory Committee members to empower information sharing. The toolkit included newsletter content, top 10 facts, graphics, links to the levy webpage and videos, suggested reader board messages and slides with levy information for sharing at school events.
- The district's internal newsletter included levy information for staff.
- Regular superintendent's updates shared levy information with staff.

# IMPLEMENTATION

## Tactics/tools

### Engagement

- A meeting with union leaders representing employee groups developed a shared understanding of the levy.
- The superintendent, deputy superintendent and two cabinet members presented levy information to staff at all work locations.
- The district's superintendent and deputy superintendent presented levy information to a variety of parent/guardian groups, as well as community and business leaders and groups upon request.
- Levy information was regularly shared during board meetings leading up to the election. Board meetings are streamed live and made available on the district website, as well as highlighted in the BGPS Bulletin.
- During two community forums, the superintendent shared levy information and provided community members with opportunities to ask questions.

### Social media

- ESD 112 developed a [winter social media plan](#) for sharing levy information and highlighting successes through Facebook and Instagram posts and reels. Content reiterated key messages.

### Media relations

- Press releases engaged local media at key milestones such as board authorization of the levy and community forums.
- Proactive outreach secured coverage in the local newspapers of record.

## Activities

» [Activities, staffing / responsibility and timeline](#)

# EVALUATION

## Implementation evaluation

- Engagement rate by reach: The communications team routinely tracks this rate to measure the percentage of people who chose to interact with social media content after seeing it.
  - » Between 1% and 5% is considered a strong engagement rate. While the rate fluctuated between 2.04% and 6.04% leading up to the election, engagement remained strong on Instagram and Facebook.
- The informational brochure was mailed to approximately 30,500 households and businesses within the district.
- Approximately 4,000 fact cards were distributed from schools and the district office and during community presentations and events.
- The levy explanatory video received 153 views.
- The capital levy webpage was the 11<sup>th</sup> most viewed page on the district website between Nov. 13 and Feb. 13, receiving 365 views.
- Approximately 10 people attended an in-person community forum. The Zoom community presentation received 60 views.
- District leaders completed approximately 30 presentations to staff at every district location and community groups.
- Media outreach resulted in six articles in the local newspapers of record.



## Impact evaluation

**Opinion change:** By February 2024, at least 50% of voters will feel that BGPS needs additional funding for facilities.

**Evaluation method:**  
[Election results February 2024](#)



**Analysis:** The capital levy required a simple majority for approval. Initial ballot returns showed the levy failing, with 49.99% yes votes and 50.01% no votes. Just four votes separated the yes and no votes.

This result closely mirrored the public opinion poll that showed that residents were evenly split on the need for funding. In the poll, 46% said that the district needed additional funding, 46% responded that the district had sufficient funding and 8% were unsure.

Late ballots tipped the results in the other direction. At the second ballot count, support had grown to 52.05% yes and 47.95% no votes, with a difference of more than 700 votes in support.

Results were certified at 52.13%. When viewed in the context of the public opinion, these results indicate that the information resonated with a significant portion of the 46% of voters who believed the district needed additional funding and a majority of the 8% who were initially unsure. This is significant when considering that voter turnout was only 31.16%.

**Opinion change:** By February 2027, at least 60% of community members will feel that BGPS needs additional funding for facilities.

**Evaluation method:** This objective will be evaluated through a public opinion poll in 2026. Continuing to gauge community sentiment and priorities will be important for the district as it evaluates future funding options.

## Qualitative evaluation

In the weeks following the election, the communications department conducted a debriefing with cabinet and board members to collect qualitative feedback that could inform future elections.

Key insights included:

- Continuing to engage staff will be important. Staff members are key communicators with family, friends and community members.
- There may be opportunities to strengthen connections with parent-teacher organizations by identifying and communicating with leaders from these groups.
- Differentiating between different types of levies will be crucial as the district faces a renewal of its educational programs and operations levy in 2025.

With voter approval of the capital levy, the district will look toward future funding options, ranging from renewal of the capital levy to a potential bond measure. As noted in the evaluation section, Battle Ground Public Schools plans to conduct subsequent public opinion polls as part of ongoing research into voter sentiment toward facility funding measures.





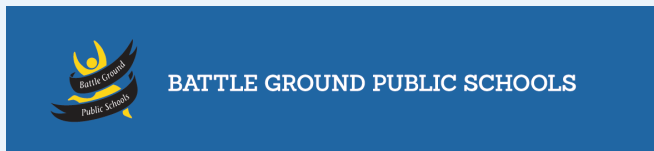
## » Capital levy branding

Strong branding created consistency among in-house and contracted staff.

### Mont Heavy DEMO

Montserrat Light  
Montserrat Regular  
**Montserrat Bold Italic**

Sanchez Light  
Sanchez Regular  
**Sanchez Semibold Italic**  
**Sanchez Bold Italic**



BATTLE GROUND PUBLIC SCHOOLS

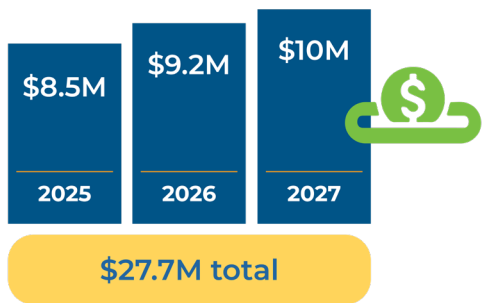
## Capital Levy



**KNOW THE FACTS**  
Top 10 facts about the capital levy

## Capital levy digital graphics

Digital graphics were created for simple animations used in social media posts and videos.





## Capital levy presentation

[View the full presentation](#)

### Our mission

Believing that every person brings value and has the capacity to do great things, we will reach each and every student academically, socially and emotionally to ensure their success in life.



Capital Levy

Feb. 13, 2024

### Issues

- Roofs at end of warranty
- Heating and cooling systems that need to be fixed
- Opportunity for greater security
- No space or insufficient space for construction trades, culinary and health sciences
- Outdated computers, phone system and wireless network



Capital Levy

Feb. 13, 2024

### Election 2024

- Deadline to register:
  - Feb. 5 online
  - Feb. 13 in person
- Ballots mailed: Jan. 26
- Election Day: Feb. 13
- Results certified: Feb. 23



Capital Levy

Feb. 13, 2024



*Superintendent Denny Waters presents during a community forum.*

# SUPPORTING MATERIALS

## Print collateral

The informational brochure was mailed to approximately 30,500 households and businesses within the district.

[View the full brochure](#)

**BATTLE GROUND PUBLIC SCHOOLS**  
Connecting every student to a successful future.

Proposition no. 7

# Capital Levy Facts

- ENHANCE SECURITY
- REPAIR ROOFS
- FIXING HEATING & COOLING
- EXPAND CONSTRUCTION TRADES
- UPDATE CULINARY & HEALTH SCIENCES
- REPLACE OLD TECHNOLOGY
- REPAIRS AND/OR UPDATES AT EACH SCHOOL

**SAME TAX RATE as in 2023**  
If approved by voters, the capital levy would take the place of an expired bond.

A student works on building a greenhouse

RETURN BALLOTS BY **Feb. 13, 2024**

## Our facilities

One of the goals in Battle Ground Public Schools is to provide safe and caring environments. Despite decades of careful maintenance, several of the district's schools have significant facility needs that impact the teaching and learning environment for students and staff

**"Safety /security needs Alarm system, classrooms able to lock from the inside, improved cameras /coverage, etc."**  
—Staff member

**"Poorly draining roofs lead to water damage to buildings... that costs money"**  
—Parent

**"The heating and air conditioning and ventilation situation is lacking. There is no consistency, parts are hard to get and it never works properly."**  
—Community member

### FAQ

**How are buildings regularly maintained?**  
BGPS spends millions each year in maintenance by using educational programs and operations levy funds. However, these funds are not sufficient to address larger needs, nor are they a long-term solution.

**What are some of the key needs?**  
In December 2022, almost 600 staff members, parents, guardians, students, community members and volunteers shared their thoughts on the top facilities needs. Major themes included overcrowding, age-condition, safety, HVAC, parking lots, layout/design/amenities and teaching and learning needs.

**Are Battle Ground schools projected to grow?**  
A recent study projected that enrollment would increase by about 19% over the next decade. The largest area of growth would be at the primary level and in the southern end of the district.

**Is the district thinking about running a bond measure or capital levy?**  
Battle Ground's board of directors is engaging in ongoing discussions about the timing of a potential bond measure or capital levy.

**What is the difference between an educational programs and operations levy, a capital levy and a bond?**  
Each of the following requires local voter approval:  

- Educational programs and operations levies pay for the staff, programs and services that the state does not provide as a part of basic K-12 education.
- Capital levies are used to fund technology improvements, enhanced building security and smaller renovation projects.
- A bond provides funding to allow a school district to purchase property, construct new schools or modernize existing schools.

**Security remains a top priority in BGPS**  
Over the past year, the district's facilities staff has been hard at work installing **new entry systems at several campuses** to improve security. Office staff will be able to see and communicate with visitors as they approach school entrances before unlocking the door. Inside schools, a secondary set of doors near the main entrance will restrict access to the rest of the school until the visitor has been approved. These systems will be installed at all schools in the district.

**Last approved bond measure**  
Voters last approved a bond measure for Battle Ground Public Schools in 2005 at a rate of \$1.26 per \$1,000. The 2005 bond paid for construction of Daybreak primary and middle schools, Tukles Valley primary and middle schools, Chief Umtouch Middle School and Ambroy Middle School. It also paid for Captain Strong Primary School expansion, technology and safety classroom expansion, technology and safety upgrades; Laurin Middle School's commons, auditorium, and roof replacements; and Battle Ground High School's stage/auditorium/cafe/terrace.

2023 REPORT TO OUR COMMUNITY 5

View the facilities spread in the annual report

# SUPPORTING MATERIALS

## Print collateral

Printed top 10 fact cards in English, Russian and Spanish were delivered to all 19 schools and the district's translators / interpreters for distribution.

[View the fact cards](#)



- 1 If approved by voters, the capital levy would fund **enhanced security measures**, including entry controls and security cameras.
- 2 It would pay for **roof repairs** and updating **heating and cooling systems**.
- 3 It would create **spaces for hands-on learning** in the construction trades, culinary arts and health sciences.
- 4 Funds would be used to **update technology**, including computers, phones and the district's wireless network.
- 5 **Every school in the district** would receive repairs and/or updates.
- 6 Property owners would begin paying for the **three-year capital levy** in 2025.
- 7 The estimated rate per \$1,000 of assessed property value is **\$0.44** for each of the three years.
- 8 **The levy would take the place of a bond that expired** at the end of 2023. The expired bond rate also was \$0.44 per \$1,000 of assessed property value.
- 9 The owner of a property assessed at \$500,000 is estimated to pay \$220 per year, or \$18.33 per month, **equivalent to the amount paid in 2023**.
- 10 The capital levy (Proposition no. 7) will appear on the ballot in the special election on **Feb. 13, 2024**.



### Capital Levy Projects List

*Project list is dependent on labor and material costs and availability.*

<p><b>District-wide projects</b></p> <ul style="list-style-type: none"> <li>• Security upgrades: entries</li> <li>• Lighting upgrades</li> <li>• Network infrastructure</li> <li>• Enhance security system</li> <li>• Replace classroom technology</li> </ul> <p><b>Captain Strong Primary</b></p> <ul style="list-style-type: none"> <li>• Recoat gym roof</li> <li>• Replace phones</li> <li>• Upgrade software, online subscriptions</li> <li>• Improve wireless network</li> </ul> <p><b>Daybreak Primary</b></p> <ul style="list-style-type: none"> <li>• Recoat roof</li> <li>• Replace classroom technology</li> <li>• Replace phones</li> <li>• Upgrade software, online subscriptions</li> <li>• Improve wireless network</li> </ul> <p><b>Glennwood Heights Primary</b></p> <ul style="list-style-type: none"> <li>• Recoat roof</li> <li>• Refurbish heating/cooling system</li> <li>• Replace classroom technology</li> <li>• Replace phones</li> <li>• Upgrade software, online subscriptions</li> <li>• Improve wireless network</li> </ul> <p><b>Maple Grove Primary</b></p> <ul style="list-style-type: none"> <li>• Install new heating/cooling roof units</li> <li>• Replace classroom technology</li> <li>• Replace phones</li> <li>• Upgrade software, online subscriptions</li> <li>• Improve wireless network</li> </ul>	<p><b>Pleasant Valley Primary</b></p> <ul style="list-style-type: none"> <li>• Refurbish heating/cooling system</li> <li>• Install new cabinet/countertops</li> <li>• Replace classroom technology</li> <li>• Replace phones</li> <li>• Upgrade software, online subscriptions</li> <li>• Improve wireless network</li> </ul> <p><b>Tukes Valley Primary</b></p> <ul style="list-style-type: none"> <li>• Recoat roofs</li> <li>• Replace classroom technology</li> <li>• Improve wireless network</li> </ul> <p><b>Yacolt Primary</b></p> <ul style="list-style-type: none"> <li>• Replace classroom technology</li> <li>• Replace phones</li> <li>• Upgrade software, online subscriptions</li> <li>• Improve wireless network</li> </ul> <p><b>Pleasant Valley Middle School</b></p> <ul style="list-style-type: none"> <li>• Refurbish heating/cooling system</li> <li>• Replace classroom technology</li> <li>• Replace phones</li> <li>• Upgrade software, online subscriptions</li> <li>• Improve wireless network</li> </ul> <p><b>Amboy Middle School</b></p> <ul style="list-style-type: none"> <li>• Recoat roofs</li> <li>• Remodel 300 building for band and science, technology, engineering and math</li> <li>• Replace classroom technology</li> <li>• Replace phones</li> <li>• Upgrade software, online subscriptions</li> <li>• Improve wireless network</li> </ul> <p><b>Tukes Valley Middle School</b></p> <ul style="list-style-type: none"> <li>• Recoat roofs</li> <li>• Replace classroom technology</li> <li>• Replace phones</li> <li>• Upgrade software, online subscriptions</li> <li>• Improve wireless network</li> </ul> <p><b>Chief Umlach Middle School</b></p> <ul style="list-style-type: none"> <li>• Recoat roof</li> <li>• Replace classroom technology</li> <li>• Replace phones</li> <li>• Upgrade software, online subscriptions</li> <li>• Improve wireless network</li> </ul>	<p><b>Daybreak Middle School</b></p> <ul style="list-style-type: none"> <li>• Recoat roof</li> <li>• Replace classroom technology</li> <li>• Replace phones</li> <li>• Upgrade software, online subscriptions</li> <li>• Improve wireless network</li> </ul> <p><b>Laurin Middle School</b></p> <ul style="list-style-type: none"> <li>• Paint interior</li> <li>• Add new covered playshed</li> <li>• Refurbish heating/cooling system</li> <li>• Replace classroom technology</li> <li>• Replace phones</li> <li>• Upgrade software, online subscriptions</li> <li>• Improve wireless network</li> </ul> <p><b>Pleasant Valley Middle School</b></p> <ul style="list-style-type: none"> <li>• Refurbish heating/cooling system</li> <li>• Replace classroom technology</li> <li>• Replace phones</li> <li>• Upgrade software, online subscriptions</li> <li>• Improve wireless network</li> </ul>	<p><b>Battle Ground High School</b></p> <ul style="list-style-type: none"> <li>• Create new construction trades building</li> <li>• Upgrade culinary space</li> <li>• Upgrade health sciences space</li> <li>• Build new field house</li> <li>• Install new heating/cooling tower</li> <li>• Replace classroom technology</li> <li>• Replace phones</li> <li>• Upgrade software, online subscriptions</li> <li>• Improve wireless network</li> </ul> <p><b>Prairie High School</b></p> <ul style="list-style-type: none"> <li>• Upgrade culinary space</li> <li>• Upgrade health sciences space</li> <li>• Refurbish heating/cooling system</li> <li>• Replace classroom technology</li> <li>• Replace phones</li> <li>• Upgrade software, online subscriptions</li> <li>• Improve wireless network</li> </ul>	<p><b>Summit View High School</b></p> <ul style="list-style-type: none"> <li>• Replace classroom technology</li> <li>• Replace phones</li> <li>• Upgrade software, online subscriptions</li> <li>• Improve wireless network</li> </ul> <p><b>Battle Ground Virtual Academy</b></p> <ul style="list-style-type: none"> <li>• Replace classroom technology</li> <li>• Replace phones</li> <li>• Upgrade software, online subscriptions</li> <li>• Improve wireless network</li> </ul> <p><b>CAM Academy</b></p> <ul style="list-style-type: none"> <li>• Replace classroom technology</li> <li>• Replace phones</li> <li>• Upgrade software, online subscriptions</li> <li>• Improve wireless network</li> </ul> <p><b>River HomeLink</b></p> <ul style="list-style-type: none"> <li>• Replace classroom technology</li> <li>• Replace phones</li> <li>• Upgrade software, online subscriptions</li> <li>• Improve wireless network</li> </ul>	<p><b>Lewisville campus</b></p> <ul style="list-style-type: none"> <li>• Replace classroom technology</li> <li>• Replace phones</li> <li>• Upgrade software, online subscriptions</li> <li>• Improve wireless network</li> </ul> <p><b>Operations building</b></p> <ul style="list-style-type: none"> <li>• Replace office technology</li> <li>• Replace phones</li> <li>• Upgrade software, online subscriptions</li> <li>• Improve wireless network</li> </ul> <p><b>CASEE (A, B &amp; C buildings)</b></p> <ul style="list-style-type: none"> <li>• Replace classroom and office technology</li> <li>• Replace phones</li> <li>• Upgrade software, online subscriptions</li> <li>• Improve wireless network</li> </ul>
--	---	---	--	--	---

**Join us in conversation about the capital levy**

**Community levy webinar**  
Monday, Jan 29  
6 p.m. to 7 p.m.  
Webinar link:

**Community levy presentation**  
Thursday, Jan 25  
6 p.m. to 7 p.m.  
Lewisville campus, Room C-26,  
406 NW Fifth Ave., Battle Ground, WA

[Learn more: battlegroundps.org/capital-levy/](https://battlegroundps.org/capital-levy/)

In addition to the top 10 capital levy facts, a list of projects for each school was distributed during events and was posted on the capital levy webpage. This helped us communicate what is included with the capital levy at a more granular level.



**BATTLE GROUND PUBLIC SCHOOLS** Proposition no. 7

# Capital Levy

Construction space Heating & cooling updates Roof repairs

**If approved, all schools in the district would receive repairs and / or updates**

- Enhance security measures through entry controls and security cameras
- Repair roofs and update heating and cooling systems
- Create spaces for hands-on student learning in the construction trades, culinary arts and health sciences
- Update technology, including computers, phones and the district's wireless network

**SAME TAX RATE**  
The capital levy would take the place of a bond that expired at the end of 2023. The proposed capital levy tax rate is estimated to be **\$0.44 per \$1,000** of assessed property value for each of the three years.

**PAID**  
EXPIRED BOND TAX RATE **\$0.44**

PROPOSED CAPITAL LEVY TAX RATE **\$0.44**

**Feb. 13, 2024** Remember to vote!

[battlegroundps.org/capital-levy/](http://battlegroundps.org/capital-levy/)



## Print collateral

Printed posters were distributed to all schools and the district office to build awareness among staff, voting-age students, volunteers and visitors.





## Print collateral

Large banners were hung in high-visibility locations outside of all schools and the district office to build awareness among staff, voting-age students, volunteers, visitors and community members who live or commute near schools.



# SUPPORTING MATERIALS

## Webpage



**Key issues**

The levy will allow the district to:

- Make ongoing security improvements
- Repair roofs nearing the end of their warranty
- Fix or replace aging heating/cooling systems
- Create or update spaces for construction trades, culinary and health sciences classes
- Update aging technology and technology infrastructure

**Learn more**

[Read the top 10 facts about the levy](#)

[View the informational brochure sent to households and businesses within the district's boundaries](#)

[Watch the levy presentation for the community](#)

[Watch the informational video](#)

**Projects list**

*Project list is dependent on labor and material costs and availability.*

- District-wide projects**
- Security upgrades; entries
  - Lighting upgrades
  - Network infrastructure
  - Enhance security system
  - Replace classroom technology

- Captain Strong Primary**
- Reccoat gym roof
  - Replace phones
  - Upgrade software, online subscriptions
  - Improve wireless network

- Daybreak Primary**
- Reccoat roof
  - Replace classroom technology
  - Replace phones
  - Upgrade software, online subscriptions
  - Improve wireless network

- Glenwood Heights Primary**
- Reccoat roof
  - Refurbish heating/cooling system
  - Replace classroom technology
  - Replace phones
  - Upgrade software, online subscriptions
  - Improve wireless network



- Maple Grove Primary**
- Install new heating/cooling roof units
  - Replace classroom technology
  - Replace phones
  - Upgrade software, online subscriptions
  - Improve wireless network

- Pleasant Valley Primary**
- Refurbish heating/cooling system
  - Install new cabinet countertops
  - Replace classroom technology
  - Replace phones
  - Upgrade software, online subscriptions
  - Improve wireless network

- Tukes Valley Primary**
- Reccoat roofs
  - Replace classroom technology
  - Replace phones
  - Upgrade software, online subscriptions
  - Improve wireless network

- Yacolt Primary**
- Replace classroom technology
  - Replace phones
  - Upgrade software, online subscriptions
  - Improve wireless network

- Amboy Middle School**
- Reccoat roofs
  - Remodel 300 building for band and science, technology, engineering and math
  - Replace classroom technology
  - Replace phones
  - Upgrade software, online subscriptions
  - Improve wireless network



- Battle Ground High School**
- Create new construction trades building
  - Upgrade culinary space
  - Upgrade health sciences space
  - Build new field house
  - Install new heating/cooling tower
  - Replace classroom technology
  - Replace phones
  - Upgrade software, online subscriptions
  - Improve wireless network

- Chief Umtech Middle School**
- Reccoat roof
  - Replace classroom technology
  - Replace phones
  - Upgrade software, online subscriptions
  - Improve wireless network

- Daybreak Middle School**
- Reccoat roof
  - Replace classroom technology
  - Replace phones
  - Upgrade software, online subscriptions
  - Improve wireless network

- Laurin Middle School**
- Paint interior
  - Add new covered playshed
  - Replace beams in B building
  - Refurbish heating/cooling system
  - Replace classroom technology
  - Replace phones
  - Upgrade software, online subscriptions
  - Improve wireless network

- Pleasant Valley Middle School**
- Refurbish heating/cooling system
  - Install new cabinet countertops
  - Replace classroom technology
  - Replace phones
  - Upgrade software, online subscriptions
  - Improve wireless network

- Tukes Valley Middle School**
- Reccoat roofs
  - Replace classroom technology
  - Replace phones
  - Upgrade software, online subscriptions
  - Improve wireless network

- Prairie High School**
- Upgrade culinary space
  - Upgrade health sciences space
  - Replace metal roof on 400 building
  - Build new field house
  - Cover bleachers at track
  - Revise bus lane route
  - Reccoat low slope roofs
  - Replace classroom technology
  - Replace phones
  - Upgrade software, online subscriptions
  - Improve wireless network

- Summit View High School**
- Replace classroom technology
  - Replace phones
  - Upgrade software, online subscriptions
  - Improve wireless network

- Battle Ground Virtual Academy**
- Replace classroom technology
  - Reccoat roofs
  - Upgrade software, online subscriptions
  - Improve wireless network

- CAM Academy**
- Replace classroom technology
  - Upgrade software, online subscriptions
  - Improve wireless network

- River HomeLink**
- Replace classroom technology
  - Replace phones
  - Upgrade software, online subscriptions
  - Improve wireless network

- Lewisville campus**
- Replace classroom technology
  - Replace phones
  - Upgrade software, online subscriptions
  - Improve wireless network

- Operations building**
- Replace office technology
  - Replace phones
  - Upgrade software, online subscriptions
  - Improve wireless network

## www.battlegroundps.org/capital-levy/

The capital levy webpage was the 11<sup>th</sup> most viewed page on the district website between Nov. 13 and Feb. 13, receiving 365 views.



**Estimated capital levy rate**

The capital levy rate is estimated to be \$0.44 per \$1,000 of assessed property value each year.

The capital levy will take the place of a bond that expired at the end of 2023. The expiring bond rate also was \$0.44 per \$1,000 of assessed property value.

2023 (Borrowed at 4% on 12/2022)	2024	2025	2026	2027
\$22 / month \$264 / year	\$22 / month \$264 / year	\$22 / month \$264 / year	\$22 / month \$264 / year	\$22 / month \$264 / year
\$18.33 / month \$220 / year	N/A	\$18.33 / month \$220 / year	\$18.33 / month \$220 / year	\$18.33 / month \$220 / year
\$14.67 / month \$176 / year	\$14.67 / month \$176 / year	\$14.67 / month \$176 / year	\$14.67 / month \$176 / year	\$14.67 / month \$176 / year

A \$500,000 property that has a 5% annual increase in assessed value is estimated to pay the following amounts:

Year	Assessed value	Est. annual payment for capital levy
2025	\$500,000	\$220
2026	\$525,000	\$231
2027	\$551,000	\$243

**2023 Clark County school property tax rates**

School district	EBSD levy	Technology levy	Bond	Capital levy	Total local bond + levy*
Cornwall School District	\$9.00	\$0.41	\$1.20	N/A	\$10.61
Washouga School District	\$9.95	\$0.20	\$1.49	N/A	\$11.64
La Center School District	\$9.31	N/A	\$1.74	N/A	\$11.05
Evergreen Public Schools	\$9.00	\$0.39	\$1.09	N/A	\$10.48
Woodland Public Schools	\$21.00	N/A	\$1.21	N/A	\$22.21
Vancouver Public Schools	\$9.79	\$0.24	\$1.74	N/A	\$11.77
Hockinson School District	\$9.00	N/A	\$1.42	N/A	\$10.42
Green Mountain & School District**	\$9.79	N/A	N/A	\$1.05	\$10.84
Ridgefield Public Schools	\$1.42	N/A	\$1.21	N/A	\$2.63
<b>Battle Ground Public Schools</b>	\$9.70	N/A	\$0.44*	N/A	<b>\$10.14</b>

\*These rates do not include the state school property tax rate of \$2.39 per \$1,000 of assessed property value in 2023.  
\*\*BPS current bond expires at the end of December 2023.  
\*\*\*Green Mountain serves K-8 students only.

**Updates**



**Cooking up something special: Culinary arts classes look to the future**

Cooking up something special: Culinary arts classes look to the future Feb. 1, 2024 - Inside of Come Fritz's culinary arts class at Battle Ground High School, students are busy chopping, mixing, measuring and taking up delicious dishes. A similar scene unfolds at Prairie High School as teacher Britt Pedlar goes from station to station, answering questions and providing advice. "I take a lot of Advanced Placement classes, so it's great to come in here and just have some fun working with other people and figuring things out," said Alyssa Woodling, a junior at Prairie. "We work really well together," agreed.

[Read more](#)

**BGHS construction program looks to build on success**

Battle Ground High School construction program looks to build on success Jan. 26, 2024 - On a rare sunny Tuesday in December, students in Dan Wilson's construction and geometry class at Battle Ground High School file outside to an open spot near the greenhouses along Main Street. They pull tarps off of lumber piles and open cargo containers, pulling out a selection of cordless tools. Under the watchful eyes of Wilson and math teacher Matt Cambien, students spread out to different stations. Some oversee the operation, while others practice measuring the pieces they need to build the various parts of what.

[Read more](#)

**Community presentations to share capital levy facts**

Community presentations to share capital levy facts Despite ongoing maintenance, Battle Ground Public Schools' buildings are aging. Many roofs and heating/cooling systems are nearing the end of their warranty. Students taking classes in the construction trades, culinary arts and health sciences do not have sufficient space or equipment. Technology has become outdated. To address these issues, as well as enhance security, Battle Ground Public Schools is asking voters to consider a capital levy, Proposition no. 7, on the ballot for the special election on Feb. 13, 2024. Voters will have an opportunity to learn about the levy in upcoming

[Read more](#)

**FAQ**

- What is a capital levy?
- Why was a capital levy on the Feb. 13 ballot?

# SUPPORTING MATERIALS

## In the news



**Voters to consider BGPS capital levy in February**

**New therapy dog provides happiness and comfort to Chief Umtuch Middle School**

**Battle Ground Public Schools Tech and security levy on ballot**

Levy would replace old bond, fund tech, facility upgrades

THIS WEEK'S CONTENTS

CLARK COUNTY | The Columbian  
www.columbian.com/news/local

Obituaries Page A10 | Here's where University of Idaho slaying case stands Page A11 | Inslee presses ahead with carbon-market plans Page A12

Wednesday, November 15, 2023 | A8

### City sets hearing on warehouse code

Vancouver proposes changes to rules for large structures

**COMMUNITY FUNDED JOURNALISM**

Under the proposal, large warehouses would no longer be allowed in light industrial zones and would only be allowed in heavy industrial zones, which typically have larger lots in more isolated areas, effectively just the Port of Vancouver and the Columbia Business Center south of state Highway 14 at the site of the former Kaiser shipyard.

The large warehouses will also be subject to climate action measures, such as having roofs that could support solar panels, electric vehicle chargers and a prohibition on truck idling.

The Vancouver City Council implemented the moratorium in late 2022 after city staff noticed an increase in proposed and under-construction large warehouses, some up to 600,000 square feet. The moratorium was to allow city staff to examine the potential impacts of these developments and develop code recommendations.

City staff attribute the jump to a national increase in online retail shopping, which requires large amounts of limited industrial land but has a low employment-per-acre ratio and low-wage jobs. Additionally, city staff were concerned about the climate impacts and aesthetics of the large warehouses.

At the Nov. 13 city council meeting, Mayor Pro Tem Ty Stuber worried that companies could dodge the proposed changes, especially the environmental ones, by applying for a 249,999-square-foot warehouse.

In response, Vancouver Community Development Director Chad Eiken said that the green building code currently being developed will fill in the gaps from the warehouse code. The green building code is targeted for next summer.

"I think it was our intent to keep this fairly modest set of climate action standards, knowing that more detailed would be coming and apply to many other types of uses and sizes of buildings," Eiken said.

**WAREHOUSES, Page A9**

### SEASON OF FIRE AND ICE

Autumn brings a story of fire and ice to the Pacific Northwest, as seen in this view as a runner passes along the Columbia River near the Port of Camas-Washougal on Tuesday morning. After showers today, sunny

[Battle Ground Public Schools will put tech technology and security levy on February ballot](#)

[Voters to consider BGPS capital levy in February](#)

[Battle Ground schools plan levy presentations](#)

[Battle Ground Public Schools offers public meetings on capital levy](#)

[Battle Ground Public Schools capital levy](#)

[Battle Ground Public Schools proposes new capital levy on Feb. 13 special election ballot](#)

[In Our View: 55% OK for school bond measures reasonable \(uses key messages from district webpage\)](#)

[Camas, Battle Ground, Woodland, Green Mountain school districts seek OK of levies in Tuesday election](#)

[School levies passing in Camas, Woodland, Green Mountain and Battle Ground](#)

[Battle Ground, Woodland school levies pass](#)

The Columbian

### School levies passing in Camas, Woodland, Green Mountain – and Battle Ground

Updated 1 hour ago | Trending

Support for Battle Ground levy surges after initial razor-thin margin Tuesday night

By Griffin Reilly, Columbian staff writer  
Published: February 13, 2024, 9:15pm  
Updated: February 14, 2024, 6:00pm





**Battle Ground Public Schools**

## BGPS Bulletin

Highlighting the great things happening in Battle Ground Public Schools

Feb. 2, 2024, edition of the BGPS Bulletin



**Missing ingredients: Culinary arts classes hope for an upgrade**

Inside of Gene Fritz's culinary arts class at Battle Ground High School, students are busily chopping, mixing, measuring and baking up delicious dishes. A similar scene unfolds at Prairie High School as teacher Britt Pedlar goes from station to station, answering questions and providing advice.



But something is missing.


"Students are learning foundations and life skills here," Pedlar said, "but if they decide to go into the industry, the line boss or chef is having to take the time to train them on how to use their professional equipment."

That's because the kitchen spaces these classes use were built during the era of home economics, featuring home-style electric ovens and other equipment that is not reflective of what students would be using in a professional kitchen.

If approved by voters on Feb. 13, a three-year capital levy would include funding to upgrade the culinary arts spaces at both Prairie and Battle Ground high schools with industry-standard equipment, better ventilation and more storage.

[Read more on the district website.](#)

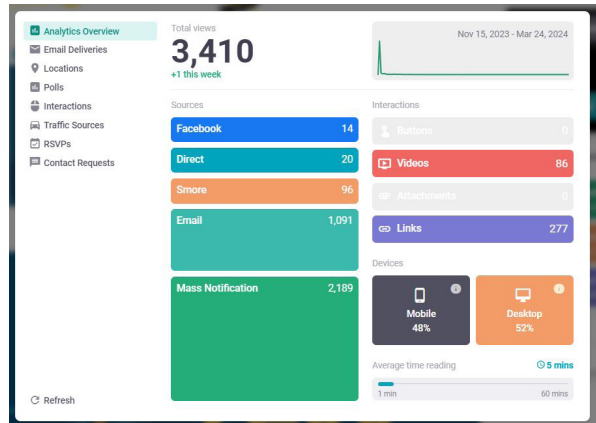
**View a list of projects the capital levy would help fund**



**vote by Feb 13**

## » Digital newsletters

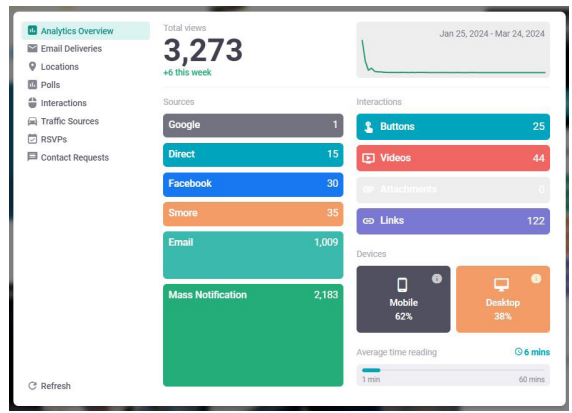
[Nov. 16, 2023 - Voters to consider capital levy in February 2024](#)



*Nov. 16 newsletter had the most views at 3,410 with an average reading time of 5 minutes*

[Dec. 14, 2023 - Attend an upcoming informational session on the capital levy](#)

[Jan. 26, 2024 - Construction program hopes to build on success](#)



*Jan. 26 newsletter had the longest average reading time of 6 minutes.*

[Feb. 5, 2024 - Missing ingredients: Culinary arts classes hope for an upgrade](#)

[Feb. 15, 2024 - Capital levy on track to pass](#)



## » Digital newsletters from our schools

Providing a toolkit to schools empowered information sharing.



**Feb. 13 capital levy information**  
Ballots for the Feb. 13 special election should have arrived in the mail by now. Residents within the boundaries of Battle Ground Public Schools will be asked to vote on a capital levy. [Check out this video on YouTube](#) to learn more about the capital levy.

Here are 10 fast facts about the levy:

1. The capital levy will appear on the Feb. 13 special election ballot.
2. The levy would fund enhanced security measures, including additional police officers and updated security cameras.
3. It would pay for roof repairs and updated heating and cooling systems.
4. It would create additional spaces for hands-on learning in science and health sciences.
5. It would fund the replacement of outdated technology, including district-wide wireless network.
6. Every school in the district would receive repairs and/or upgrades to roofs, heating and cooling systems, and other facility issues.
7. Property tax collections for the levy would begin in 2025.
8. The estimated rate would be \$0.44 per \$1,000 of assessed value.
9. That amount matches a bond that expired at the end of 2023.
10. The owner of a home worth \$500,000 would pay approximately \$220 per year, equivalent to the amount paid in 2023.

Please remember to vote by Feb. 13!  
[Read more about the capital levy and view a proposed list of projects.](#)

**10 главных фактов о левии – налоге с капитала**

1. В случае одобрения избирателями налог на капитал усиленные меры безопасности, включая контроль и видеонаблюдение.
2. Он позволит оплатить ремонт крыши и обновление систем отопления и охлаждения.
3. За счет сбора средств будут созданы помещения для строительства профессора, кулинарного мастерства и других программ.
4. Средства пойдут на обновление технологий, включая беспроводную сеть округа.
5. Все школы округа получат средства на ремонт и/или замену оборудования.
6. Владельцы недвижимости начнут платить за тротуары и парковки.
7. Расчетная ставка на \$ 1000 оценочной стоимости и

### Feb. 2024 - Pleasant Valley Primary School



**February 2024 Daybreak Middle School News**

- Wednesday one-hour late starts: February 14, 21, 28
- No School: Monday, February 19 for President's Day
- Upcoming: Early Release March 20-21 for Parent/Teacher Conferences
- Upcoming: Spring Break - April 1-5, 2024



**TOP 10 Capital Levy Facts**

**SAME TAX RATE**  
If approved, the capital levy would take the place of a bond that expired at the end of 2023.

**Capital Levy Amounts & Costs**

ANNUAL COST TO TAXPAYERS	COLLECTION AMOUNTS
\$200   \$29   \$44	\$0.44   \$0.24   \$0.44

**Total Local School Tax Rates**

2023-2024 Projected Rates	2024-2027 Projected Rates
\$2.21	\$2.17
\$0.44	\$0.47
\$2.25	\$2.64
	Total local tax rate: \$2.11

**School Menus are back online**  
After experiencing some technical issues, Sodexo, the district's nutrition services provider, has completed updates to their online menu system. You can now [find them updated regularly on the district website](#). We appreciate the patience of our school communities during this process.

#### Daybreak Middle School Expectations

**Snacks, gum, candy, and drinks in class are becoming an issue**  
Reminder of expectations for all students:

### Feb. 2024 - Daybreak Middle School

## » Internal newsletter



**BGPS Buzz**  
What you need to know

- In this issue:
- Introducing the name of your new staff newsletter
  - Share your wellness tips
  - Employee assistance and wellness programs
  - Washington Apple Health for adults and children
  - Message from the superintendent
  - Capital levy: Remember to vote by Feb. 13
  - Payroll deductions
  - Hiring event Jan. 25
  - Incident weather information
  - W-2s available by Jan. 31
  - Deferred Compensation Program
  - Upcoming staff survey
  - Employee Recognition Award
  - Recent administrative changes
  - Supporting multilingual learners
  - River HomeLink's 30th anniversary
  - The Art of Tech

#### Capital levy: Remember to vote by Feb. 13

A capital levy for BGPS is on the ballot for the February special election. If approved by voters who live within the district, the three-year capital levy would provide funds to address facility issues, update security measures, expand career and technical education opportunities and replace outdated technology. All schools in the district would receive updates. [See the list of projects for each school.](#)

#### Key dates

- Deadline to register to vote: Feb. 5 online and Feb. 13 in person at the elections office
- Ballots mailed: Jan. 26
- Election Day: Feb. 13
- Results certified: Feb. 23

#### Guidelines for staff

- Please take a moment to review the Public Disclosure Commissioner's [guidelines for school districts in election campaigns](#). The PDC has outlined activities that are and are not permitted by public employees. School staff are not permitted to use work hours or public resources to promote or defeat a ballot measure. The guidelines specifically mention the following permitted activities. School staff:
- May engage in campaign activities on their own time, during non-work hours and without using public resources.
  - May not use work hours or public resources to promote or defeat a ballot measure.
  - May respond to questions regarding a ballot measure if such activity is consistent with their normal and regular duties.
  - May wear campaign buttons or similar items while on the job.
  - May place window signs or bumper stickers on their privately owned cars, even if those cars are parked on school property during working hours.
  - May not display signs or stickers that encourage a yes vote in classrooms or on desks that belong to the school district.

Please contact our communications office at [communication@battlegroundps.org](mailto:communication@battlegroundps.org) if you have questions.

### BGPS Buzz internal communication

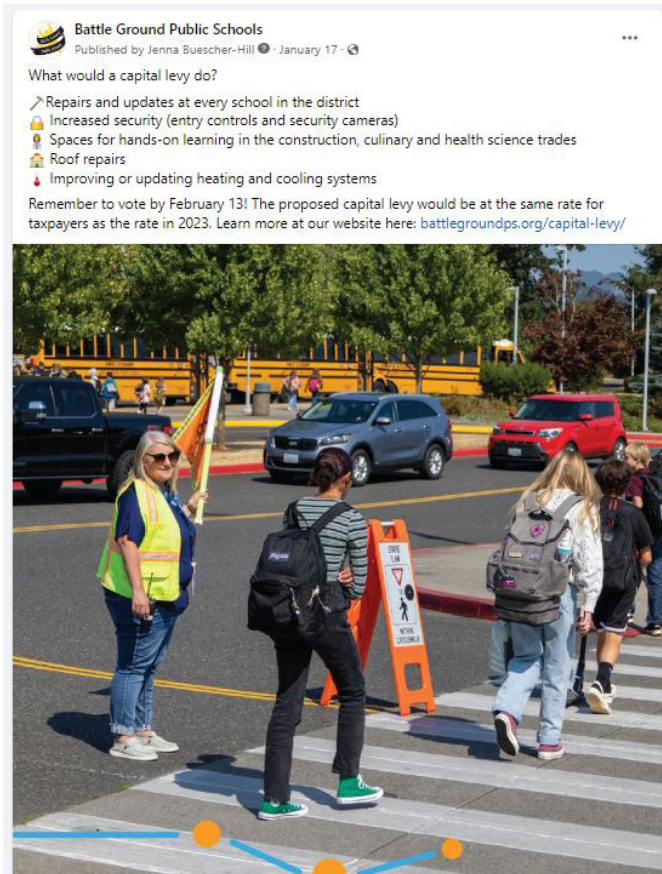
# SUPPORTING MATERIALS

## Social media

Social media posts helped us engage with our community.

 /BattleGroundPS

 /battlegroundps



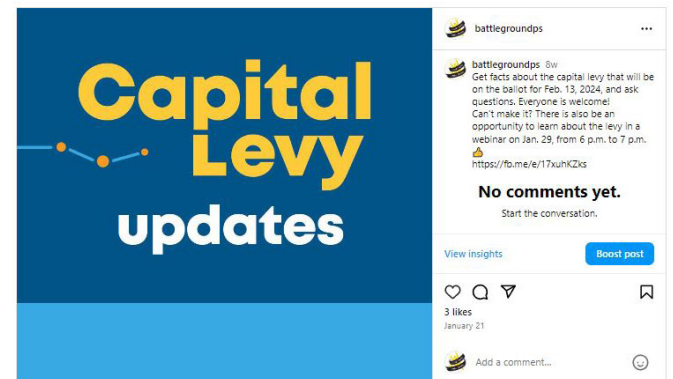
Jan. 17 Facebook post - What would a capital levy do?



Jan. 3 Facebook post - Replaces expired bond



Jan. 18 Facebook post - Throwback Thursday



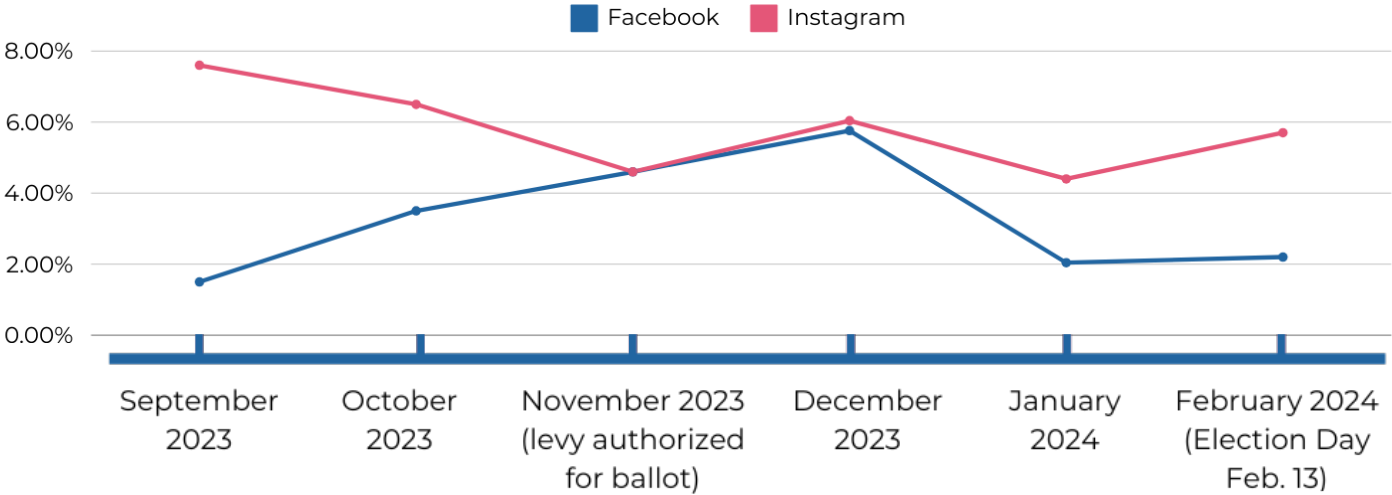
Jan. 21 Instagram post - Levy forum notice



## » Social media

The communications team routinely tracks engagement rate by reach to measure the percentage of people who chose to interact with social media content after seeing it.

- » Between 1% and 5% is considered a strong engagement rate. While the rate fluctuated between 2.04% and 6.04% leading up to the election, engagement remained strong on Instagram and Facebook.



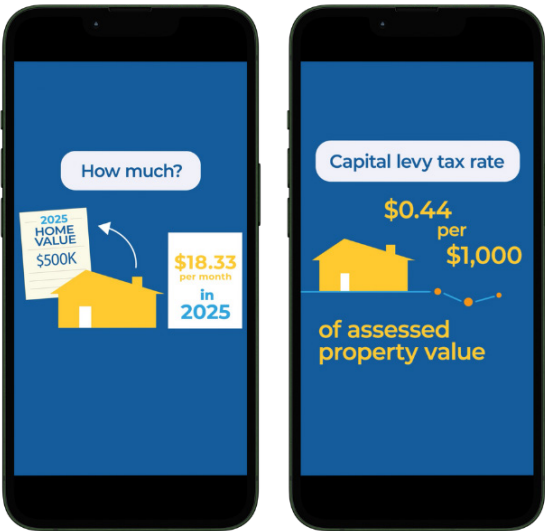


## **Levy videos**

Short videos helped our community understand what the needs are and how much the levy will cost a typical homeowner in Battle Ground.



[Video - Get the facts about the Feb. 13 capital levy](#)



[Jan 5 Instagram reel: What will the proposed BGPS capital levy cost?](#)

[Jan 12 Instagram reel: Three things you need to know about the BGPS capital levy](#)

[Jan. 17 Instagram reel: Would the capital levy raise taxes above the 2023 rate?](#)



[Jan. 26 Instagram reel: Ballots for the February 13 special election are being mailed today](#)

[Jan. 31 Instagram reel: If Battle Ground voters approve the capital levy on Feb. 13...](#)



[Feb. 13 Instagram reel: Today is Election Day!](#)



»» **Feb. 13 election results**

BATTLE GROUND SCHOOL DISTRICT NO. 119 Proposition No. 7		
Measure	Vote	Vote %
Levy...Yes 	6,738	49.99%
Levy...No 	6,742	50.01%
<b>Total Votes</b>	<b>13,480</b>	

*Initial election results*

BATTLE GROUND SCHOOL DISTRICT NO. 119 Proposition No. 7		
Measure	Vote	Vote %
Levy...Yes 	9,469	52.13%
Levy...No 	8,695	47.87%
<b>Total Votes</b>	<b>18,164</b>	

*Final election results*



*Thank you post on social media to our community.*